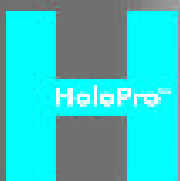
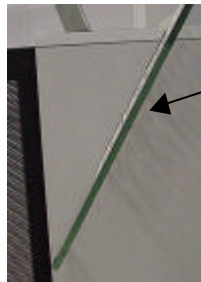


Assembly Instructions for the HoloTerminal



The HoloTerminal consists of the following components:

- HoloPro™ screen for the HoloTerminal
- HoloTerminal cabinet
- Stainless-steel keyboard with touchpad
- Y cable
- Driver diskette for keyboard and touchpad



First of all, insert the HoloTerminal screen into the slit provided, making sure that the marking on the screen is on the top at the left as you look at it.

As there is a danger of breaking the glass, do not jam the screen as you put it down.

The HoloTerminal features a middle shelf designed to take a computer (minitower). The bottom shelf is intended for the projector.



The HoloTerminal is designed for use with the Sharp PG-C30 projector. Alternatively, you may use the projectors VT 400 and VT 540 from NEC. These have to be placed 20 mm higher. The electricity supply to the HoloTerminal is laid through a hole in the shelf. Use the enclosed VGA cable (monitor cable) to connect the computer to the projector. The stainless-steel keyboard is hooked up to the mouse and the computer



keyboard terminal using the Y cable provided. The corresponding cable ends are marked accordingly (MOUSE/KEYBOARD). Now, the computer and projector can be switched on.



The projector is generally recognised by Windows as a Plug and Play monitor. Should the computer fail to locate the mouse, you will have to install the mouse driver from the enclosed diskette.

In order to set up the projector, zoom the picture down to as small as possible and focus it. Then adjust the Keystone equalisation so that the sides of the image are vertical. Now, the image can be centred using the adjusting unit mounted on the mirror. Precise picture adjustment is performed using zoom, Keystone and the mirror adjustment unit on the tilted mirror.



Once precise adjustment has been completed, secure the door of the HoloTerminal with the aid of the attached lock.

